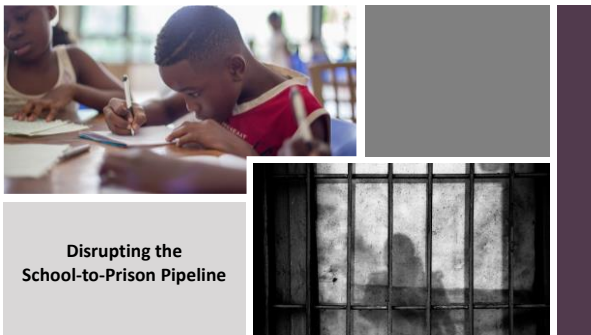




ABA Resolution on FASD

RESOLVED, That the American Bar Association urges attorneys and judges, state, local, and specialty bar associations, and law school clinical programs to help identify and respond effectively to Fetal Alcohol Spectrum Disorders (FASD) in children and adults, through training to enhance awareness of FASD and its impact on individuals in the child welfare, juvenile justice, and adult criminal justice systems and the value of collaboration with medical, mental health, and disability experts.



Preschool to Prison Pipeline




Preschoolers are **3** times more likely to be suspended than students in K-12.

Every day about **250** preschoolers are suspended or expelled in the US. 


Children suspended early in their education are **10** times more likely to drop out of school.

These kids are also more likely to end up in the criminal justice system.

How much more likely K-12 students in the following groups are to be suspended than their white peers:


	In US	In MN
Students with disabilities	2x	2x
Black	3x	8x
American Indian	4x	10x

Dd is for...




DHR

The MN Department of Human Rights (DHR) and Minnesota school law require schools to investigate reports of bullying.



discipline

Discipline alternatives from suspension and expulsion are used by 90% of schools. 70% of school discipline is discretionary (not required).



disparity

Black children make up only 14% of total enrollment but 47% of suspensions. 70% of total discipline is discretionary (not required).



Strategies to Support Students with an FASD



Incapacitated vs. In Need of Support
Steven & Candace's Story

- Held a job at a local grocery store for years
- Cooks his own meal
- Balances checkbook independently
- Arranges transportation to and from work independently
- Needed reminders for medications and paying bills

Minn. nonprofits seek to overhaul legal guardianship system for vulnerable adults







Punishing People that are Pregnant with an SUD is not best practice

- Inherent inequities and discrimination
- Not grounded in evidence
- Unintended consequences
- Prenatal care ameliorates adverse effects of substance use during pregnancy





SAMHSA Domains




Ask the Expert
Series: National
Center on FASD
Justice & Equity
www.fasdcenter.org

Family Law: It's Complicated

Family Law: It's Complicated

- The most common call
- Custody considerations
- Structured environments
- The external brain concept
- Educating: Parents, Attorneys, Courts
- Waivered Services





FASD & Victimization

Sexual Exploitation

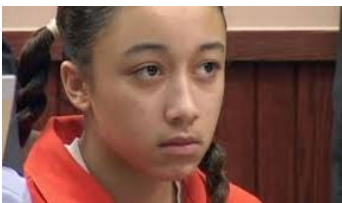
Sasha's Story

- Born in Romania in 1991
- Orphanage – 3 years
- Adopted by Family in MN
- Multiple Diagnoses
- Vulnerability





IQ, ACEs FASD, and the Courts



Cyntoia Brown

Neuropsych identified challenges in:

- Planning
- Impulsivity
- Motor Coordination
- Receptive & Expressive Communication
- Adaptive Functioning



Texas Executes Prisoner with an FASD After Federal Appeals Court Denies Stay of Mark Soliz

- In 2002 U.S. Supreme Court ruled in *Atkins v. Virginia* that people with intellectual disability cannot be executed
- Earlier appeal argued he qualified for a diagnosis of intellectual disability, but the court rejected ruling that Soliz's IQ score of 75 was slightly above the threshold
- Court rejected that a general intellectual disability as a result of other disorders
- Johnson County paid \$905,544.13, not including the cost of incarceration or appeal



Why Awareness of FASD is Not Enough